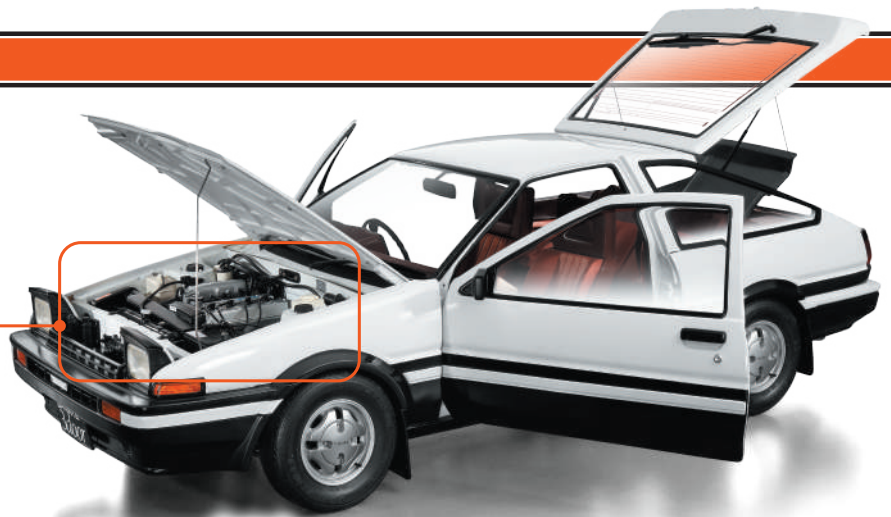


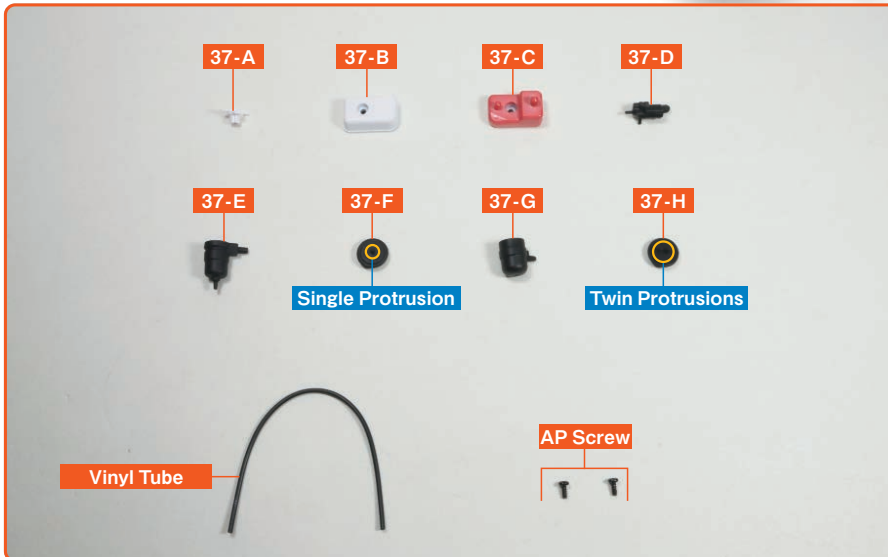
Issue 37

In this issue, we will assemble auxiliary components such as the radiator reservoir tank and idle-up device, then attach them, along with the associated wiring, to the 36-A Front Fender Apron (R) assembled in Issue 36.



Assemble the Engine Bay (2)

※ In this guide "Left" or "(L)", and "Right" or "(R)", refer to the direction as viewed from the driver's seat.



- 37-A** Reservoir Hose Connector
- 37-B** Radiator Reservoir Tank (1)
- 37-C** Radiator Reservoir Tank (2)
- 37-D** Idle-up Device Solenoid Valve
- 37-E** Fuel Filter
- 37-F** Fuel Filter Cap
- 37-G** Charcoal Canister
- 37-H** Charcoal Canister Cap
- AP Screw** (1.7×4 mm) ×2+ Spare

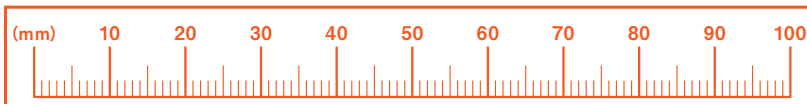
Vinyl Tube

View the follow-along video

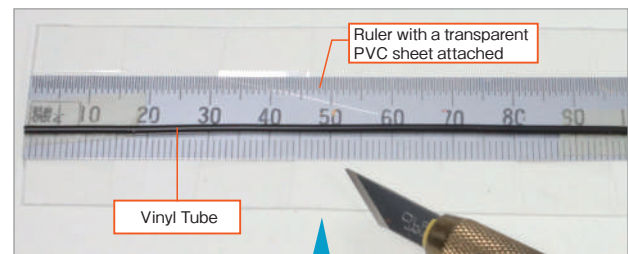
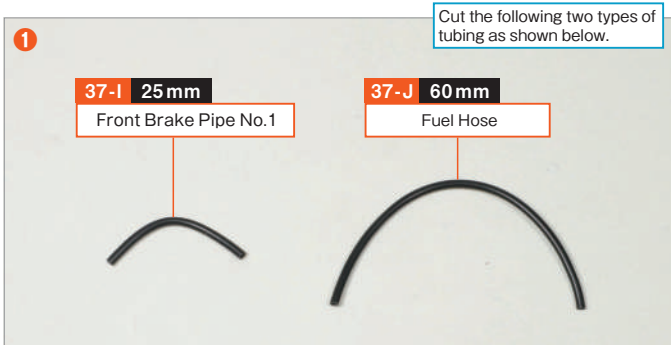


※ Due to the model's design, the shapes of some parts may differ from those of the real vehicle.

step 1 Prepare the Wiring

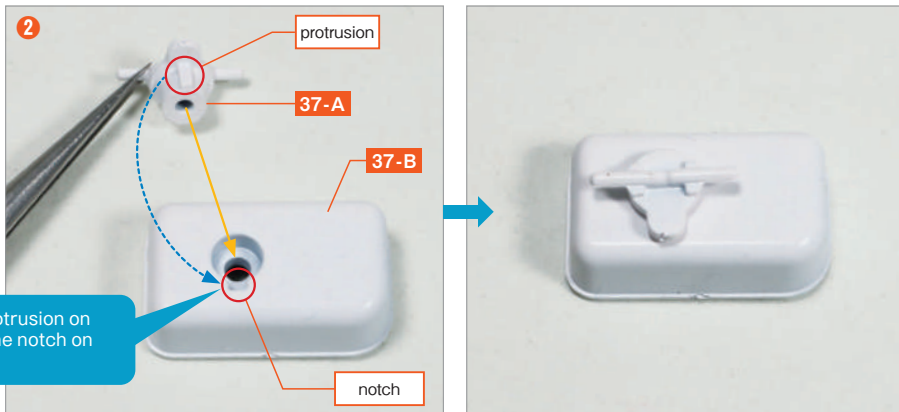


Cut the wiring used in Step 3 from the vinyl tube. Use the ruler on the left, or make a simple measuring tool as shown below, then cut the tubing to length with a craft knife or scissors while measuring carefully.



To avoid damaging the ruler, attach a transparent PVC sheet to the ruler, temporarily secure the vinyl tube with double-sided tape, and cut it with a craft knife.

step 2 Assemble the Auxiliary Components

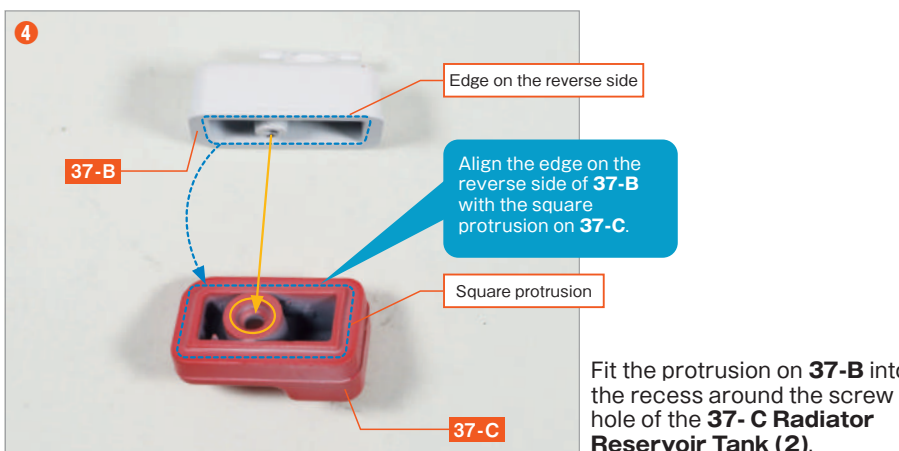


Align the protrusion on 37-A with the notch on 37-B.

Fit the protrusion of the **37-A Reservoir Hose Connector** into the screw hole of the **37-B Radiator Reservoir Tank** (1).



Secure it from the reverse side of **37-B** with an **AP screw**.

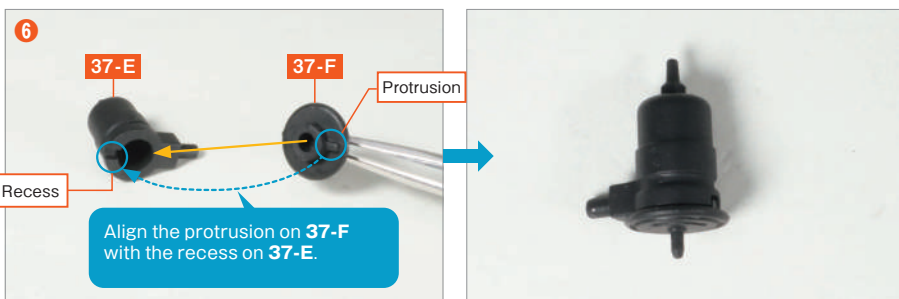


Align the edge on the reverse side of 37-B with the square protrusion on 37-C.

Fit the protrusion on **37-B** into the recess around the screw hole of the **37-C Radiator Reservoir Tank** (2).

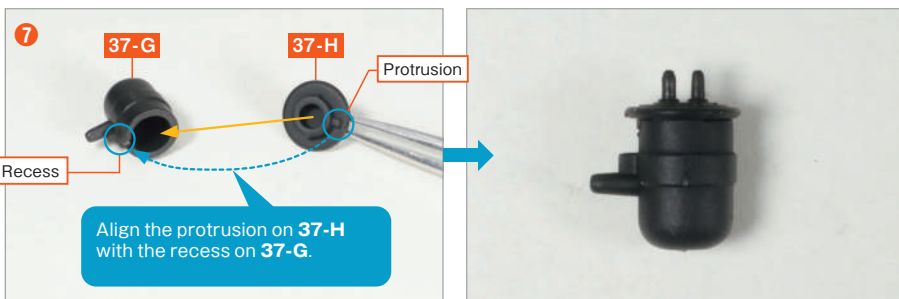


Secure it from the reverse side of **37-C** with an **AP screw**.



Align the protrusion on 37-F with the recess on 37-E.

Fit the protrusion of the **37-F Fuel Filter Cap** into the hole in the **37-E Fuel Filter**.



Align the protrusion on 37-H with the recess on 37-G.

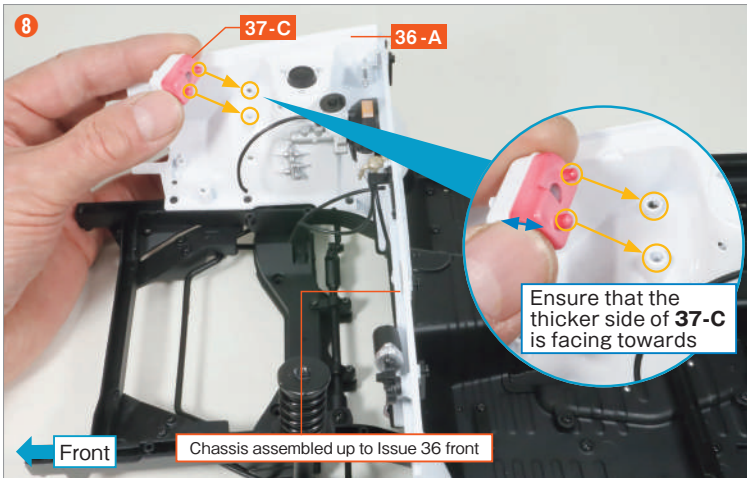
Fit the protrusion of the **37-H Charcoal Canister Cap** into the hole in the **37-G Charcoal Canister**.



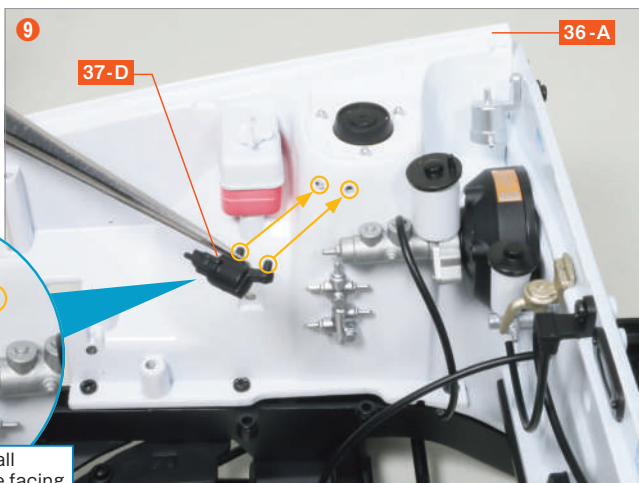
Step complete

step 3 Attach components to the 36-A Front Fender Apron (R) and complete wiring

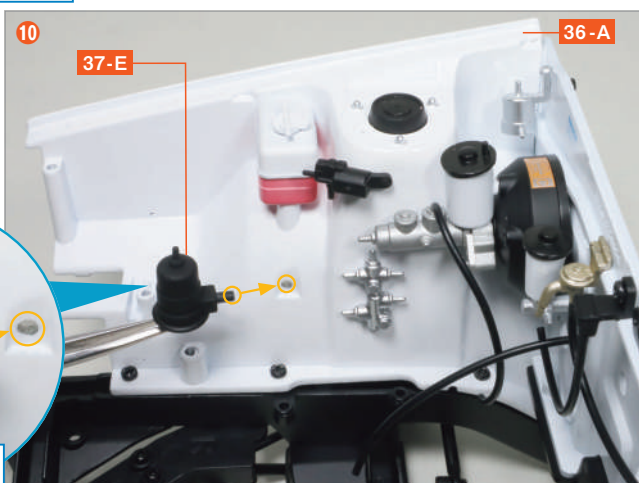
If the parts are too tight and difficult to insert in Steps 8 to 10, slightly enlarge the holes in the 36-A Front Fender Apron (R) using a diamond file or similar tool, or carefully trim the protrusions on the parts with a knife. However, take care not to remove too much material, as this may make the fit loose and cause the parts to come off easily. If any of the parts come loose easily, apply a small amount of all-purpose adhesive when fitting them into place.



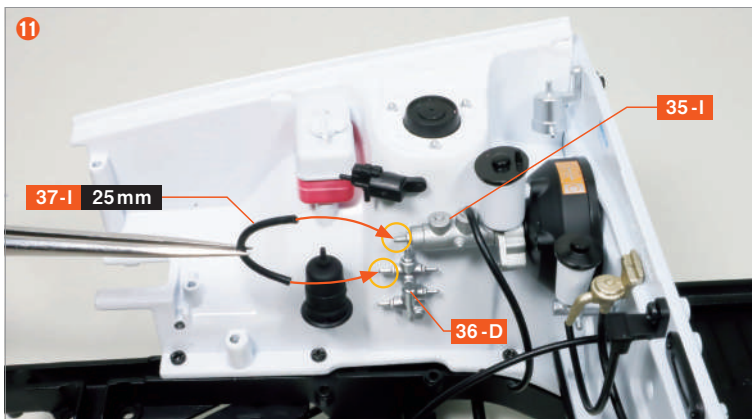
Prepare the chassis assembled up to Issue 36, and fit the protrusions on 37-C into the two holes in the 36-A Front Fender Apron (R).



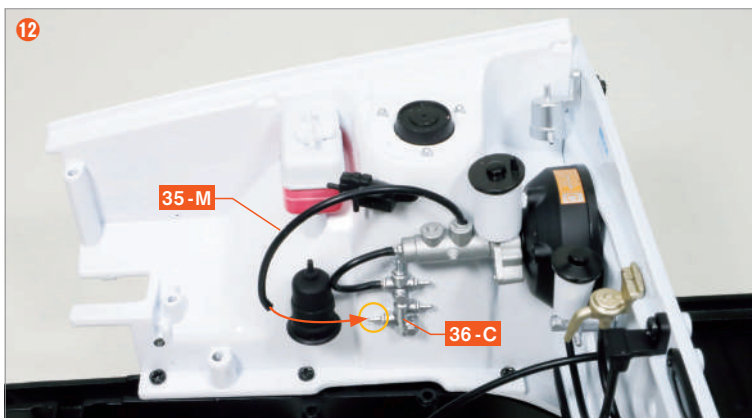
Fit the two protrusions of the 37-D Idle-up Device Solenoid Valve into the holes in 36-A.



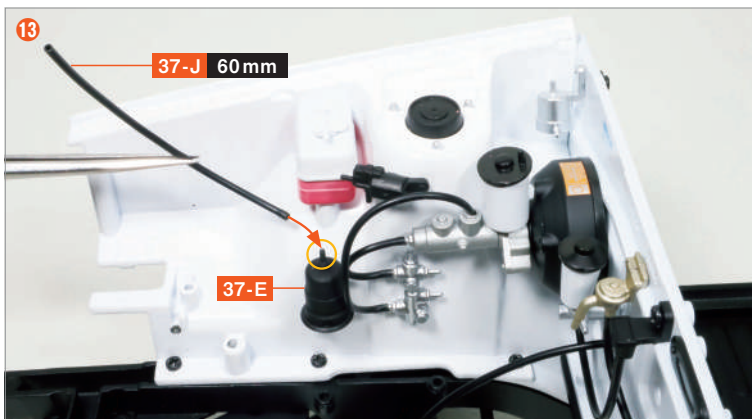
Fit the protrusion of 37-E into the hole in 36-A.



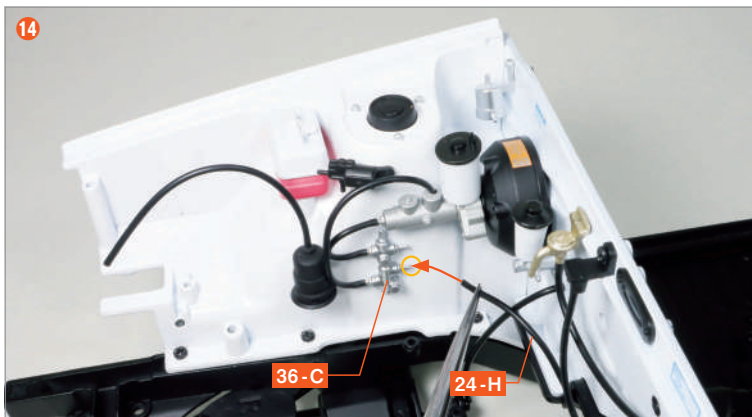
Insert the **37-I Front Brake Pipe No.1** cut in Step 1 onto the protrusion of the **35-I Brake Master Cylinder** and the left-hand protrusion of the **36-D Front Brake Hose Connector**.



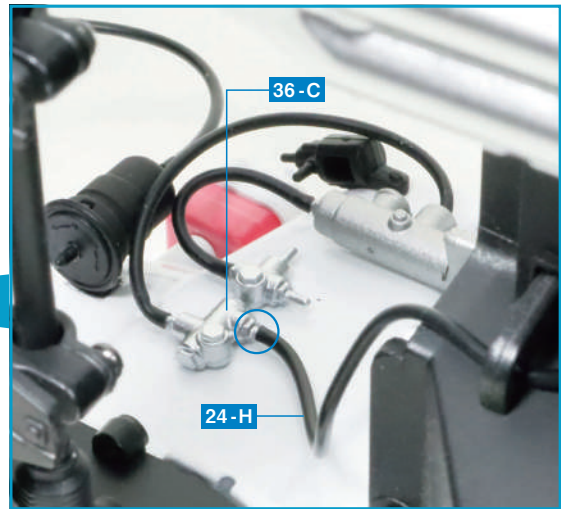
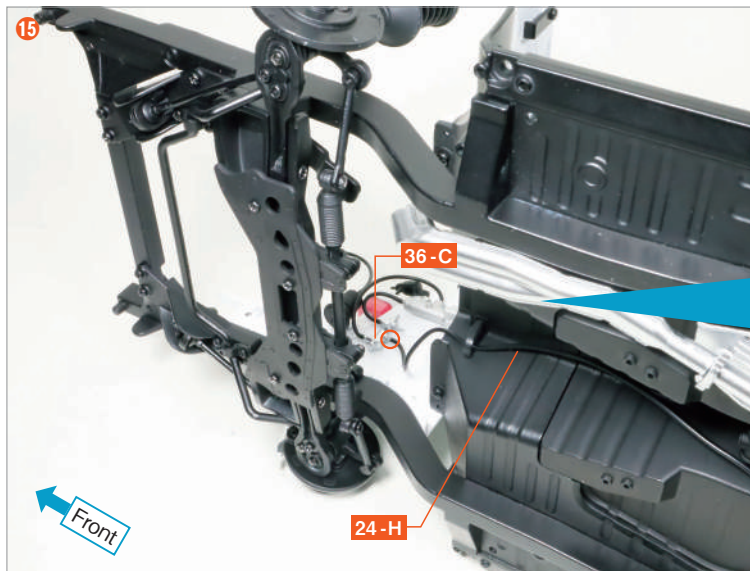
Insert the **35-M Rear Brake Pipe No.1** fitted in Issue 35 onto the left-hand protrusion of the **36-C Proportioning Valve**.



Insert the **37-J Fuel Hose** cut in Step 1 onto the protrusion of **37-E**.



Insert the **24-H Rear Brake Pipe No.3**, fitted to the underside of the chassis in Issue 28, onto the right-hand protrusion of the **36-C Proportioning Valve**.



After inserting **24-H** into the right-hand protrusion of **36-C** in Step **15**, the assembly should look like this when viewed from underneath the chassis.

Step complete



Complete

The assembly for Issue 37 is complete.

Additional auxiliary components have now been fitted to the right front fender apron, making the engine bay even more realistic.

The 37-G Charcoal Canister assembled in Step **7** will be used in a later issue, so please keep it in a safe place to avoid losing it. In Issue 38, you will fit the base for the retractable headlamp mechanism and install the fuel system pipework.

